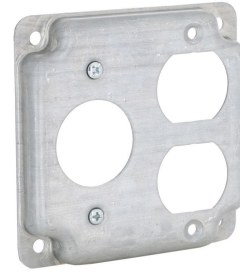




4 in. Square Cover, Exposed Work, Duplex/1.406 in. dia. Receptacle

By RACO
Catalog # 806C



4 in. Square Cover, Exposed Work, Duplex/1.406 in. dia. Receptacle

Features

- RACO® exposed work covers include required hardware for mounting the receptacle(s)
- RACO® exposed work covers meet the requirements of the 2014 NEC Article 250.146(A). No bonding jumper is required for covers with: (1) Crushed corners
- Hardware and cover are packed in a poly-bag with printed catalog number, compliances and installation instructions
- cULus Listed

Specifications

Certified Listed	cULus Listed
Buy American Compliant	Contact Manufacturer
EU RoHS Indicator	Contact Manufacturer
Buy America(n) Qualified	Contact Manufacturer

Configuration

Number of Gang(s)	2-Gang
-------------------	--------

Dimensions

Cubic Capacity	6.5 cu.in
Length	0.563 in
Size	4 in

Raised Height	0.50 in
Width	4.125 in
Weight	0.422 lb.
Height	4.125 in
Dimensions	0.563 in x 4.125 in x 4.125 in

General

Type	Exposed Cover
Material	806C
Paintable/Stainable	No
UPC	050169999813

Logistics

Minimum Pack Quantity	10
Packaging Type	Polybag
Carton Quantity	10
Pallet Quantity	3780

Product Assets

- [Catalog \[English\]](#)
- [Catalog \[English\]](#)
- [Catalog Page \[English\]](#)
- [Installation Manual \[English\]](#)