

Product data sheet

Specifications

SQUARE D



Enclosed circuit breaker, QO, 1 phase, 2 spaces, 100A, NEMA3R, UL, consumer pack

QO2100NRBCP

⚠ To be discontinued on: Jan 16, 2026

⚠ To be discontinued

Product availability: Stock - Normally stocked in distribution facility

Main

Product Type	Enclosed circuit breaker
Range of Product	QO

Complementary

Current Rating	100 A
Interrupt Rating	22 kA
Number of Spaces	2
Maximum Number of Single Pole Circuits	2
Maximum Number of Tandem Breakers	0
Number of Phases	1 phase
Enclosure Rating	NEMA 3R outdoor
Breaker Compatibility	Circuit breaker QO 2P
Product Certifications	UL Listed
Wiring Configuration	3-wire
Electrical Connection	Lugs
Wire Size	AWG 14...AWG 1 copper AWG 12...AWG 1 aluminium
Surface Finish	Baked enamel Gray
Busbar Material	Tin plated copper; busbar
Type of Packing	Consumer packaging
Tightening Torque	35 lb.in, AWG 14...AWG 10, copper 35 lb.in, AWG 12...AWG10, aluminium 40 lb.in, AWG 8...AWG 4, aluminium/copper 50 lb.in, AWG 3...AWG 2, aluminium/copper Main lugs 50 lb.in, AWG 3...AWG 1, aluminium/copper
Box Number	10R
Ground Bar	Grounding bar (ordered separately)
Enclosure Material	Welded galvanized steel
Enclosure Type	Enclosure
Height	13.2 in (335 mm)
Width	6.9 in (176 mm)
Depth	4.12 in (104.65 mm)

Price is "List Price" and may be subject to a trade discount – check with your local distributor or retailer for actual price.

Ordering and shipping details

Category	US1DE2A00005
Discount Schedule	DE2A
GTIN	047569517624
Returnability	Yes
Country of origin	MX

Packing Units

Unit Type of Package 1	PCE
Nbr. of units in pkg.	1
Package 1 Height	5.200 in (13.208 cm)
Package 1 Width	8.200 in (20.828 cm)
Package 1 Length	14.500 in (36.830 cm)
Package weight(Lbs)	8.600 lb(US) (3.901 kg)
Unit Type of Package 2	PAL
Number of Units in Package 2	120
Package 2 Height	43.200 in (109.728 cm)
Package 2 Width	40.000 in (101.600 cm)
Package 2 Length	48.000 in (121.920 cm)
Package 2 Weight	936.000 lb(US) (424.562 kg)

Contractual warranty

Warranty	18 months
----------	-----------



Environmental Data

Schneider Electric aims to achieve Net Zero status by 2050 through supply chain partnerships, lower impact materials, and circularity via our ongoing “Use Better, Use Longer, Use Again” campaign to extend product lifetimes and recyclability.

[Environmental Data explained >](#)

[How we assess product sustainability >](#)

Environmental footprint

Carbon footprint (kg CO2 eq, Total Life cycle) **30**

Environmental Disclosure [Product Environmental Profile](#)

Use Better

Materials and Substances

Packaging made with recycled cardboard **No**

Packaging without single use plastic **No**

[EU RoHS Directive](#) **Compliant with Exemptions**

REACH Regulation [REACH Declaration](#)

California proposition 65 **WARNING: This product can expose you to chemicals including: Lead and lead compounds, which is known to the State of California to cause cancer and birth defects or other reproductive harm. For more information go to www.P65Warnings.ca.gov**

Use Again

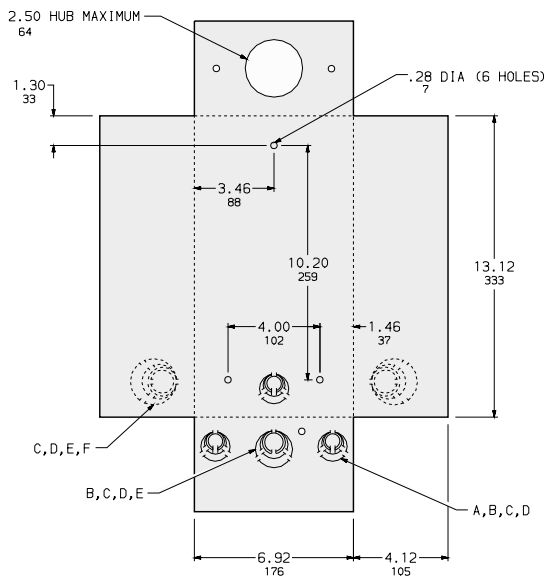
Repack and remanufacture

Circularity Profile **No need of specific recycling operations**

Take-back **No**

Technical Illustration

Dimensions



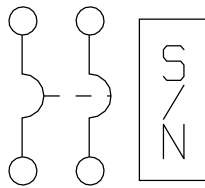
KNOCKOUTS						
SYMBOL	A	B	C	D	E	F
IN	.50	.75	1.00	1.25	1.50	2.00
MM	13	19	25	32	38	51

in.
mm

All dimensions are approximate. Also see technical documentation.

Technical Illustration

Wiring diagram



120/240VAC

QO2100BNF
QO2100BNS
QO2100BNRB

Image of product / Alternate images

Alternative



